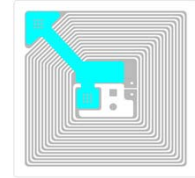


# HF Adhesive Label

(Item : AL02502521H)

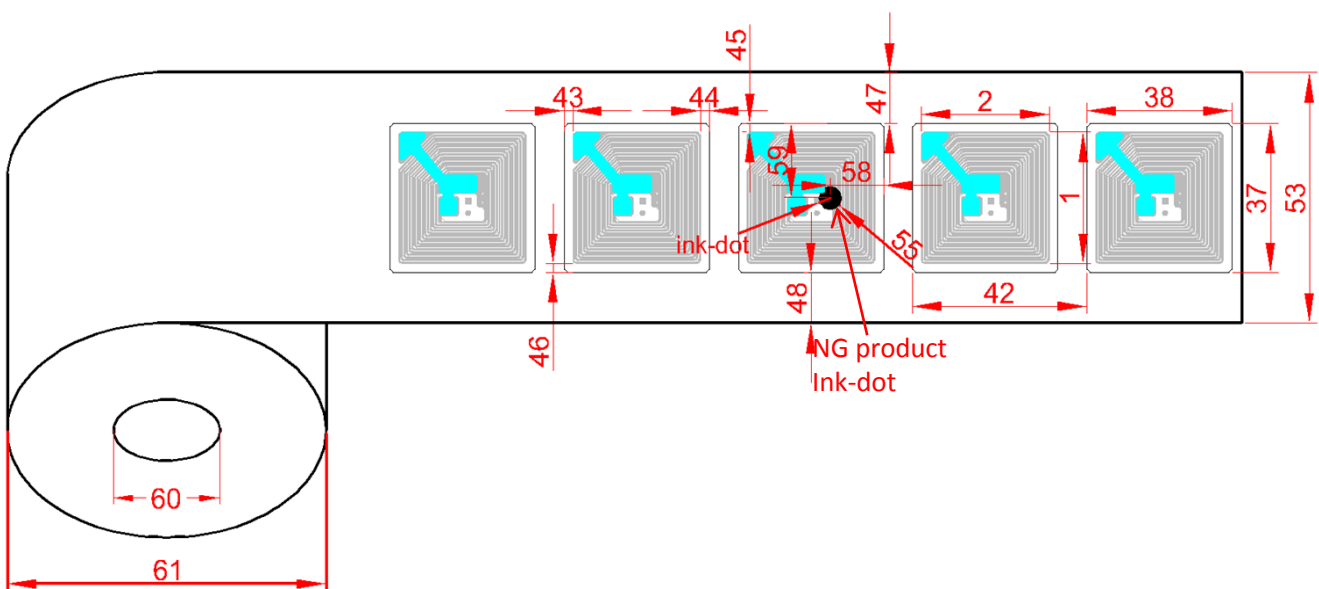
## 1. Performance Specifications

RFID Chip	FM11RF08
Protocol	ISO 14443A
Operating Frequency	13.56MHz
Operating Mode	Passive(Battery free)
Memory	1 Kbyte, organized in 16 sectors with 4 bolcks of 16 bytes each
IC Life	100,000 Programming cycles, 10 years data retention

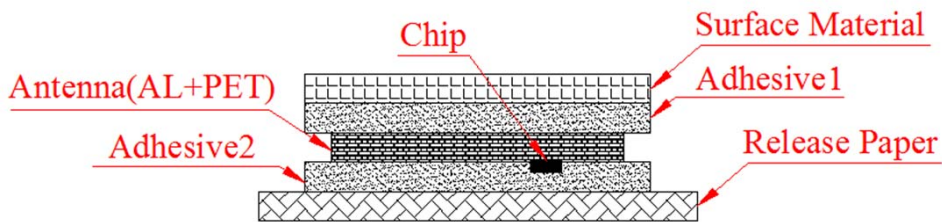


## 2. Mechanical Dimensions

NO.	Item	Parameter(mm)	Tolerance	Parameter(in.)
1	Antenna Width	22.00 mm	± 0.20 mm	0.866 in
2	Antenna Length	22.00 mm	± 0.20 mm	0.866 in
37	Label Width	25.00 mm	± 0.20 mm	0.984 in
38	Label Length	25.00 mm	± 0.50 mm	0.984 in
42	Label Pitch	30.00 mm	± 1.00 mm	1.181 in
43	Antenna Edge to Label Edge (Left)	1.50 mm	± 0.50 mm	0.059 in
44	Antenna Edge to Label Edge (Right)	1.50 mm	± 0.50 mm	0.059 in
45	Antenna Edge to Label Edge (Top)	1.50 mm	± 0.50 mm	0.059 in
46	Antenna Edge to Label Edge (Bottom)	1.50 mm	± 0.50 mm	0.059 in
47	Label Edge to Liner Edge (Top)	8.50 mm	± 0.50 mm	0.335 in
48	Label Edge to Liner Edge (Bottom)	8.50 mm	± 0.50 mm	0.335 in
53	Liner Width	42.00 mm	± 1.00 mm	1.654 in
55	Ink-dot Size	5.00 mm	± 2.00 mm	0.197 in
58	Ink-dot to Product Edge(Right)	9.18 mm	± 2.00 mm	0.361 in
59	Ink-dot to Product Edge(Top)	12.60 mm	± 2.00 mm	0.496 in
60	Core inner diameter	76.20 mm	± 0.50 mm	3.000 in
61	Reel Outer diameter	≤ 203mm (Based on the actual shipment quantity)		



### 3. Label Structure



Surface Material	White Synthetic paper	62g/m <sup>2</sup> , 75μm ± 10%
Adhesive 1	Acrylic emulsion	19g/m <sup>2</sup> ± 5g/m <sup>2</sup>
Antenna	Aluminum etching	AL + PET (10μm + 50μm)
Adhesive 2	Acrylic emulsion	25g/m <sup>2</sup> ± 5g/m <sup>2</sup>
Release Paper	White glassine paper	61g/m <sup>2</sup> ± 10%, 55μm ± 10%

### 4. Environment Requirement

Operating Temperature/Humidity	-0~60°C / 20%~80% RH	
Storage Temperature/Humidity	20~30°C / 20%~60% RH	
Shelf Life	1 year in anti-static bag at 20~30°C / 20% ~60% RH	
ESD Voltage Immunity	2 kV (HBM)	
Bending Diameter	> 50mm	

### 5. Delivery Details

Appearance	Single row reel form	
Quantity	3000 ± 10 pcs/Roll; 12 Rolls/Carton	440x440x150mm (Based on the actual shipment quantity)
Weight	To be determined	
Final inspection	100 %, known faulty ones marked	
Delivery yield	≥ 99%	

Packaging Photograph



AllGood-Group reserves the right for modifying the specification data without notice in advance!